



Nebraska Wheat Varieties

100 Centennial Mall North, Room 298, Lincoln, Nebraska 68508
402) 437-5541 · (402) 437-5547 FAX · www.nass.usda.gov



Released February 2010

Pronghorn Most Popular Winter Wheat Variety Planted for 2010

Highlights

After five years, Pronghorn was able to overtake Jagalene as the most popular winter wheat variety planted in Nebraska, according to USDA's National Agricultural Statistics Service, Nebraska Field Office. Pronghorn's percent of total acres was up from 2009 but had the same number of acres as a year ago due to fewer acres planted to all varieties. Pronghorn first appeared in the state in 1994 and has held a prominent share of the state's seedings for several years. Millenium was close behind and is the second most popular variety planted with Jagalene beating out TAM 111 for third place.

For the 2010 crop, Pronghorn accounted for 13.7 percent of the acreage. Millenium was planted on 11.9 percent of the acreage and Jagalene accounted for 8.5 percent of the acreage total.

District Highlights

Pronghorn was the most popular wheat variety in the Northwest District. Wesley was the most popular variety in the North and Northeast Districts and second in the East District. Millenium had second place presence in the Northwest and Northeast. Arapahoe had the highest acreage in the Central District. Overland had the most acres in the East and Southeast District while Tam 111 was the number one choice in the Southwest District and second in the Central and South Central Districts.

Hard White Winter Wheat:

Percent of Planted Acreage, Nebraska, 2006-2010

Variety	2006	2007	2008	2009	2010
<i>Percent</i>					
All White Varieties	1.0	1.5	1.9	1.6	0.9

Of the total hard white winter wheat acreage for 2010, the most common varieties planted were NuGrain and Aspen.

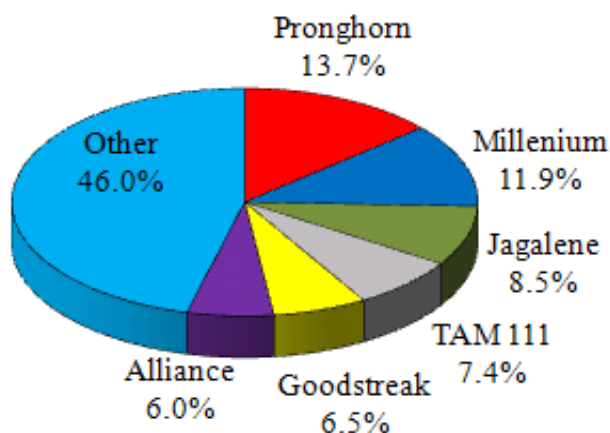
Funding

Supporting funds for this report, "Nebraska Wheat Varieties", were provided by the Nebraska Wheat Board from wheat producer check off funds.

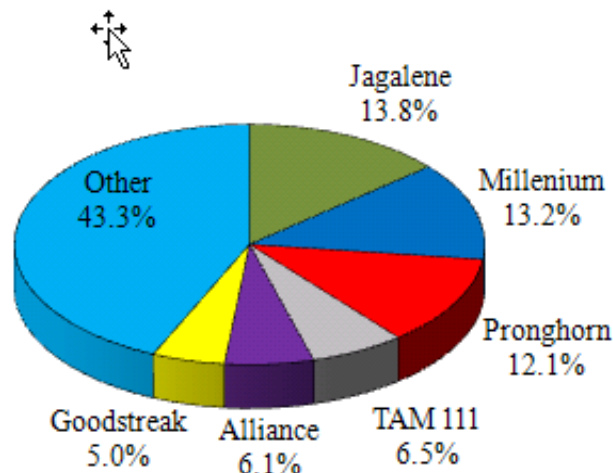
Data Source

This wheat variety data was provided by over 1,500 voluntary reports from Nebraska wheat producers who responded to the 2009 Fall Agricultural Report. This summary includes reports representing eighteen (18) percent of the state's total planted acreage estimate.

Top Wheat Varieties for 2010



Top Wheat Varieties for 2009



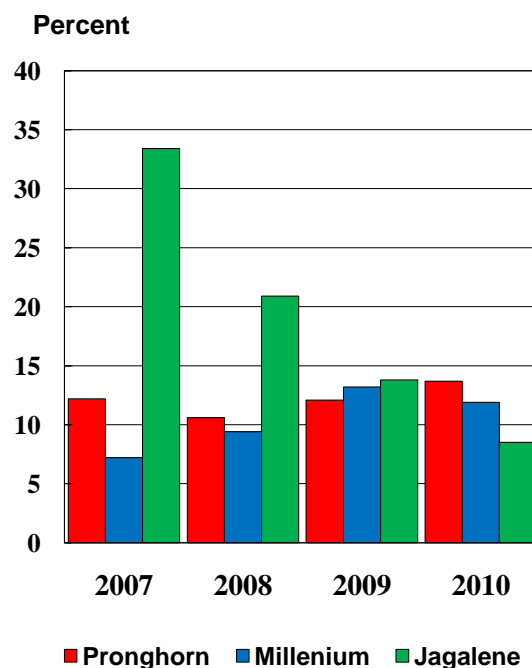
Variety Descriptions

Pronghorn is a tall variety of moderately early maturity with good tillering ability and moderately strong straw. It has good yield stability in the Nebraska panhandle and dryland production areas in adjacent states. Yield is comparable to Buckskin with superior stem rust resistance. Pronghorn has a long coleoptile, very good early spring re-growth, and good winter hardiness. The grain has good test weight patterns and very acceptable milling/baking qualities. Pronghorn was developed by Nebraska and the USDA-ARS from the cross Centura/Dawn//Colt sib.

Millennium is a medium maturing, medium height variety and is well adapted throughout most of the Nebraska dryland wheat production areas and adjacent states. It has been competitive in yield to Niobrara and Culver. It was tested under the designation NE94479. Millennium has fair to good winter hardiness, medium length coleoptile, very good tillering ability, and moderately strong straw (equal to 2137 and Windstar). It is resistant to Hessian fly; moderately resistant to stem rust; moderately susceptible to leaf rust; susceptible to soil borne mosaic and barley yellow dwarf viruses. Millennium was developed by Nebraska and the USDA-ARS from the cross Arapahoe/Abilene//NE86488.

Jagalene is a medium maturing variety with excellent straw strength. It is resistant to stem rust, leaf rust and soil borne wheat mosaic virus. It is moderately resistant to wheat streak mosaic virus and is susceptible to Hessian fly. Jagalene is widely adapted and demonstrates good disease resistance and drought tolerance. Jagalene was selected from the cross Abilene/Jagger.

**Top Wheat Varieties for 2010
Historical Comparison by Year**



**Winter Wheat: Percent Planted to Each Variety
Nebraska, 2002-2010**

Variety	2002	2003	2004	2005	2006	2007	2008	2009	2010
	<i>Percent</i>								
Pronghorn	10.8	10.3	10.4	11.4	10.1	12.2	10.6	12.1	13.7
Millennium	3.5	6.1	11.1	10.7	9.5	7.2	9.4	13.2	11.9
Jagalene (AgriPro)		²	4.5	16.8	23.8	33.4	20.9	13.8	8.5
TAM 111(AgriPro)				²	1.2	1.6	3.2	6.5	7.4
Goodstreak			¹	1.7	3.7	3.6	5.1	5.0	6.5
Alliance	16.6	11.5	13.6	10.1	10.1	7.2	6.1	6.1	6.0
Overland							¹	3.4	5.6
Buckskin	6.2	7.3	4.9	3.7	5.0	3.5	3.4	3.3	4.5
Postrock(AgriPro)						²	1.1	4.1	4.4
Wesley	2.2	3.6	5.9	5.5	5.8	7.2	7.7	4.8	4.1
Infinity CL						¹	2.3	3.5	3.7
Art (AgriPro)								²	2.4
Arapahoe	13.0	8.7	6.8	5.2	2.9	2.0	3.4	2.2	2.1
Hawken (AgriPro)								1.2	2.1
Karl (all)	3.3	3.8	3.3	2.7	2.7	1.6	2.9	2.5	1.6
Hatcher							¹	1.2	1.5
Thunderbolt (AgriPro)	²	2.0	3.0	1.9	1.9	2.0	2.4	1.6	1.5
Thunderbird (AgriPro)								²	1.1
Other Public	35.9	36.5	28.0	22.8	18.1	12.3	15.1	10.5	7.8
Other Private	8.5	10.2	8.5	7.5	5.2	6.2	6.4	5.0	3.6
	<i>Thousand Acres</i>								
Total Planted	1,650	1,900	1,850	1,850	1,800	2,050	1,750	1,700	1,500

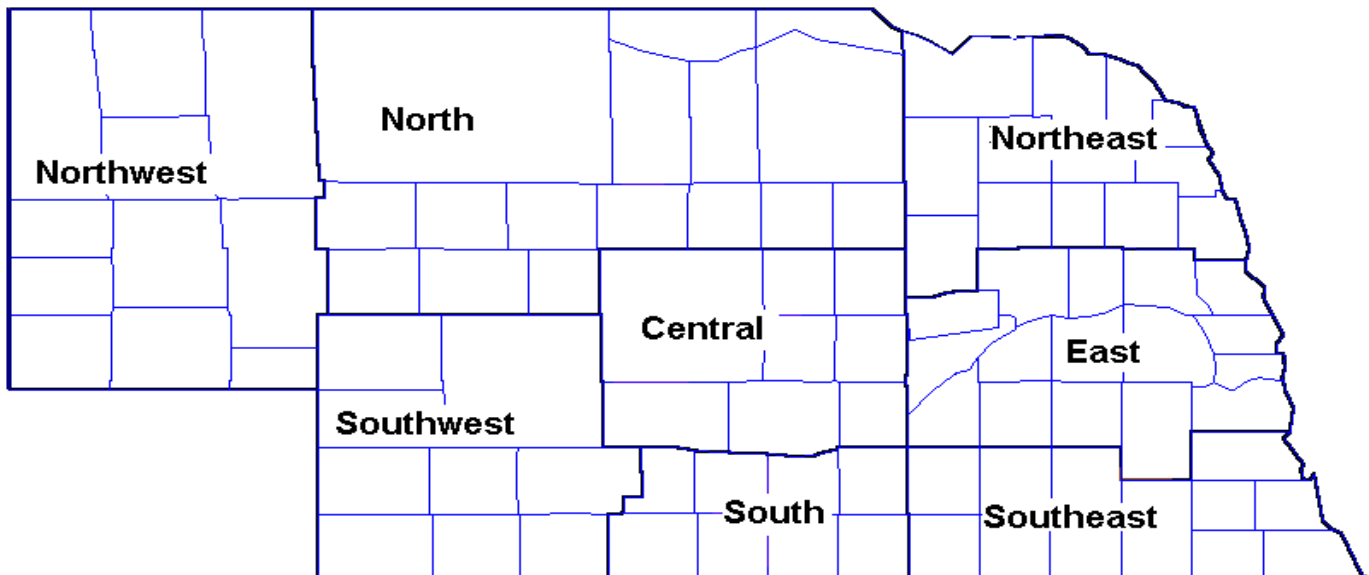
¹ Less than one percent, included in Other Public. ² Less than one percent, included in Other Private.

Winter Wheat: Percent Planted to Each Variety by District, Nebraska, 2010

Variety	Northwest	North	Northeast	Central	East	Southwest	South	Southeast	State
<i>Percent</i>									
Pronghorn	24.9			0.6		3.8	0.1	0.2	13.7
Millenium	13.9	5.1	18.4	11.5	9.4	11.2	7.5	6.4	11.9
Jagalene (AgriPro)	6.4	10.2	12.2	6.8	8.3	12.5	10.4	4.6	8.5
TAM 111(AgriPro)	0.5	22.9		11.8		19.8	14.5		7.4
Goodstreak	12.7					0.5			6.5
Alliance	9.0	7.8	0.8	1.9		4.7			6.0
Overland	1.3	5.6	9.5	8.2	34.8	6.7	10.1	18.6	5.6
Buckskin	8.5					0.8	0.3		4.5
Postrock(AgriPro)	0.2		11.1	7.1	5.0	7.0	14.8	10.0	4.4
Wesley	2.9	27.5	30.1	4.1	10.3	1.3	6.4	9.2	4.1
Infinity CL	5.8	2.8	3.6	2.2	1.2	2.0	0.5		3.7
Art (AgriPro)				2.9	1.9	5.6	6.0	3.0	2.4
Arapahoe	1.5			23.2	4.6	1.8	2.4	2.6	2.1
Hawken (AgriPro)	0.8			3.6	2.8	3.3	7.1	0.8	2.1
Karl (all)				1.6	5.5	0.6	4.0	13.3	1.6
Hatcher	2.1					1.7		0.1	1.5
Thunderbolt (AgriPro)	0.1			2.7		4.2	2.6	0.2	1.5
Thunderbird (AgriPro)	1.5					0.6		2.0	1.1
Other Public	4.7	8.1	14.3	7.6	14.9	7.8	9.8	25.6	7.8
Other Private	3.2	10.0		4.2	1.3	4.1	3.5	3.4	3.6
<i>Thousand Acres</i>									
Total Planted ¹	762	18	21	26	25	401	141	106	1,500

¹Preliminary.

Nebraska Agricultural Statistics Districts



**Winter Wheat: Acres Planted to Each Variety
Nebraska, 2002-2010**

Variety	2002	2003	2004	2005	2006	2007	2008	2009	2010
	<i>Thousand Acres</i>								
Pronghorn	178	196	192	210	182	250	186	206	206
Millenium	57	116	205	197	172	148	165	224	178
Jagalene (AgriPro)		²	84	310	429	685	366	234	127
TAM 111(AgriPro)				²	22	33	56	110	111
Goodstreak			¹	31	67	74	89	85	98
Alliance	275	218	252	187	182	148	107	104	89
Overland							¹	57	84
Buckskin	103	139	91	68	91	72	59	56	68
Postrock(AgriPro)						²	19	70	66
Wesley	36	68	109	102	104	148	135	81	61
Infinity CL						¹	40	60	56
Art (AgriPro)								²	36
Arapahoe	215	165	127	97	52	41	59	37	32
Hawken (AgriPro)								20	32
Karl (all)	54	72	60	49	49	33	51	43	24
Hatcher							¹	21	23
Thunderbolt (AgriPro)	²	38	55	35	34	41	42	27	22
Thunderbird (AgriPro)								²	16
Other Public	593	708	532	439	323	251	264	178	117
Other Private	139	180	143	125	93	126	112	87	54
Total Planted	1,650	1,900	1,850	1,850	1,800	2,050	1,750	1,700	1,500

¹ Less than one percent, included in Other Public. ² Less than one percent, included in Other Private.

Note: Historical variety reports for earlier years can be found on the web at:

[http://www.nass.usda.gov/Statistics by State/Nebraska/Publications/Crop Variety Reports/index.asp](http://www.nass.usda.gov/Statistics_by_State/Nebraska/Publications/Crop_Variety_Reports/index.asp)

We express our appreciation to the Nebraska Crop Improvement Association for variety descriptions. For additional information on specific varieties, please contact the Nebraska Crop Improvement Association at (402) 472-1444.

USDA NASS
Nebraska Field Office
P.O. Box 81069
Lincoln, Nebraska 68501-1069
OFFICIAL BUSINESS
PENALTY FOR PRIVATE USE, \$300

ADDRESS SERVICE REQUESTED

USDA PERMIT NO. G-38

POSTAGE & FEES PAID

PRESORTED STANDARD